

FILL-RITE DEF TM



DEF / ADBLUE[®]
PUMP SYSTEMS & ACCESSORIES
FROM THE LEADER IN FUEL TRANSFER

 **Tuthill**
PUMP YOUR HEART INTO IT

FILL-RITE DEF™

DF Series | DEF Dispensing Pump Systems

The new DF Series DEF pumps and systems from Fill-Rite provide quick, easy, and safe dispensing. With 8 GPM flow rates, your choice of AC or DC power, and all-in-one systems ready to go right out of the box, pumping Diesel Exhaust Fluid has never been easier.

Whether you pump from an IBC, tote, or drum, there is a DF series system for you.

Options include mounting brackets, hoses, fittings, and nozzles with digital meters pre-attached at the factory. Best of all, it comes from Fill-Rite, so you know it is built for performance and durability. Take control of your DEF use; choose a DF Series system from Fill-Rite, the most trusted name in pumps and meters.



Pump Features & Benefits

- **Rugged Multi-Diaphragm Technology** - Specifically designed for DEF / AdBlue® dispensing
- **Integral Pulsation Dampener** - Smooth flow at point of use
- **30-Minute Duty Cycle** - 120V AC or 12V DC
- **Self-Priming to 6 Feet** - Saves time with quick fluid lift
- **8 GPM Flow Rate** - Ideal dispense rate for most tank sizes
- **EPDM Seals** - Designed, tested and proven specifically for DEF
- **Stainless Steel Exterior Hardware** - Ideal material for DEF / AdBlue®

120V AC
DF120N



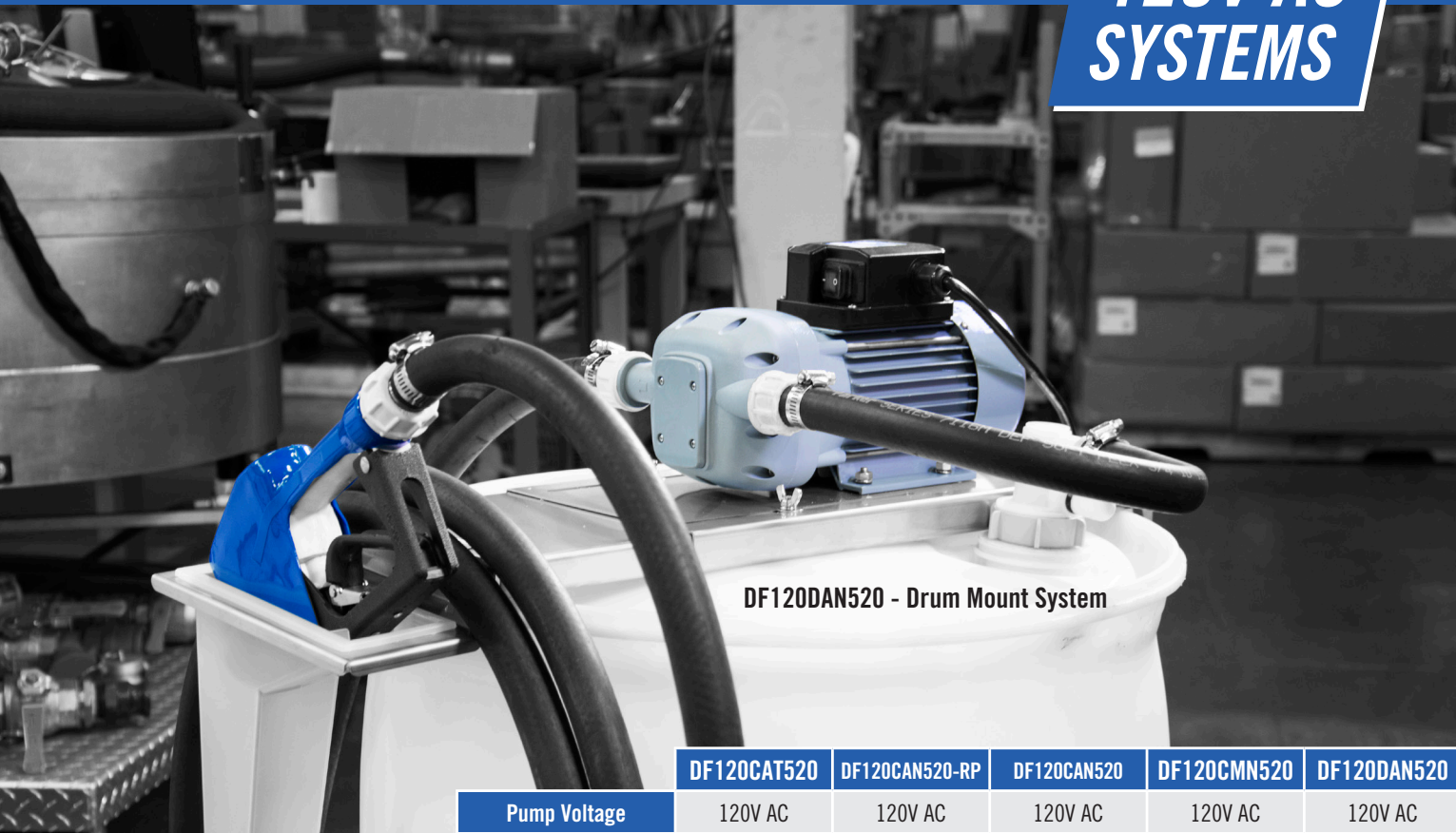
12V DC
DF012N

	DF120N	DF012N
Flow Rate	8 gpm / 30 lpm	
Max. Bypass	38 psi / 2.6 bar	
Voltage	120V AC	12V DC
Wetted Construction	Nylon, EPDM, Santoprene®, Stainless Steel	
Duty Cycle	30 Min. ON / 30 Min. OFF	
Compatible Fluids	Water, Diesel Exhaust Fluid	
Inlet / Outlet	1" BSPP	
Connections Kit (included)	(2) 1" BSPP x 3/4" hose barb 90° elbows, (2) 1" BSPP x 3/4" hose barb straight fittings, (4) Worm gear hose clamps	

2 YEAR WARRANTY
ON ALL MODELS

120V AC SYSTEMS

12V DC SYSTEMS



DF120DAN520 - Drum Mount System



DF120CAT520 - Cage Mount System with Nozzle, Meter, and RPV

	DF120CAT520	DF120CAN520-RP	DF120CAN520	DF120CMN520	DF120DAN520
Pump Voltage	120V AC	120V AC	120V AC	120V AC	120V AC
Bracket Type	Cage IBC	Cage IBC	Cage IBC	Cage IBC	Drum
Nozzle Boot & Bracket	Included	Included	Included	Included	Included
Turbine Meter	TT10PB	-	-	-	-
Nozzle Type	Automatic	Automatic	Automatic	Manual	Automatic
Micro Matic® RPV	Included	Included	-	-	-
5' Suction Hose	Included	Included	Included	Included	Included
20' Discharge Hose	Included	Included	Included	Included	Included
Connections	(2) 1" BSPP x 3/4" hose barb 90° elbows, (2) 1" BSPP x 3/4" hose barb straight fittings, (4) Worm gear hose clamps				

	DF012CAT520	DF012CAN520-RP	DF012CAN520	DF012CMN520
Pump Voltage	12V DC	12V DC	12V DC	12V DC
Bracket Type	Cage IBC	Cage IBC	Cage IBC	Cage IBC
Nozzle Boot & Bracket	Included	Included	Included	Included
Turbine Meter	TT10PB	-	-	-
Nozzle Type	Automatic	Automatic	Automatic	Manual
Micro Matic® RPV	Included	-	Included	-
5' Suction Hose	Included	Included	Included	Included
20' Discharge Hose	Included	Included	Included	Included
Connections	(2) 1" BSPP x 3/4" hose barb 90° elbows, (2) 1" BSPP x 3/4" hose barb straight fittings, (4) Worm gear hose clamps			



DF120CAT520

Auto Nozzle AC System, In-line Meter, RPV



DF120CAN520-RP

Automatic Nozzle AC System, RPV



DF120CAN520

Automatic Nozzle AC System



DF120CMN520

Manual Nozzle AC System



DF120DAN520

Drum Mount AC System, Auto Nozzle



DF012CAT520

Auto Nozzle DC System, In-line Meter, RPV



DF012CAN520-RP

Automatic Nozzle DC System, RPV



DF012CAN520

Automatic Nozzle DC System



DF012CMN520

Manual Nozzle DC System

System Component Details

Cage Bracket

- Stainless steel
- Hangs on many types of caged totes
- High capacity hose bracket accommodates 20'

Drum Bracket (DF120DAN520 only)

- Stainless steel
- Securely mounts to 30 and 55-gallon drums

Nozzle Boot

- Keeps nozzle clean and free of debris
- Nozzle tip submerged in water stays clean
- Removable boot for easy clean-up
- Multiple secure mounting configurations

Hose

- 3/4" EPDM DEF rated

Nozzle

- Automatic or manual

Turbine Meter (CAT520 models only)

- +/- 1% accuracy
- 4-Digit display: ounces, pints, quarts, liters or gallons
- Factory calibrated, installed and tested
- Easy field calibration
- Replaceable AA batteries

Micro Matic® Composite Dispense Coupler (RPV)

- (CAT520 and CAN520-RP models only)
- Dispense from drum or IBC
- For use with either RSV or RPV 4-Key Container Valve
- Fast "Turn, Click and Go" connections
- Self-locking handle eliminates accidental disengagement
- Protects fluid purity by allowing dispense only

FILL-RITE DEF™

DF Series | DEF Accessories



FRDFA075A

- Automatic DEF nozzle
- Stainless Steel
- 3/4" BSP connection



KITDFMN

- DEF Automatic metering nozzle
- In-line turbine meter
- 3/4" SS Hose barb connection w/ swivel



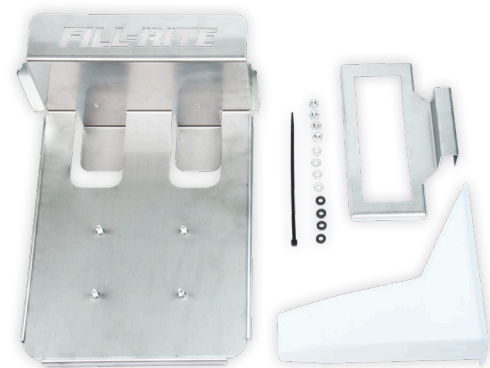
FRDFM075C

- Manual DEF nozzle
- Non-metallic
- 3/4" Hose barb connection



FRDFM075B

- Automatic DEF nozzle
- Non-metallic
- 3/4" SS Hose barb connection w/ swivel



KITDFCB

- FILL-RITE IBC/Tote bracket
- Stainless Steel construction including hardware
- Includes nozzle boot and reservoir



KITDFDB

- FILL-RITE Drum bracket
- Stainless Steel construction expands for 30 to 55 gallon drums
- Includes nozzle boot and bracket



KITDFNB

- Nozzle boot and bracket
- Removable boot for easy clean-up
- Keeps nozzle clean and free of debris



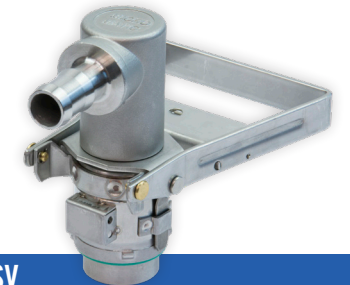
MMSS075EPV

- Micro Matic® Stainless Steel, EPV coupler
- 3/4" Horizontal hose barb connection
- For use with 3-key EPV container valves



MMNM075RPV

- Micro Matic® Non-metallic, RPV coupler
- 3/4" Horizontal hose barb connection
- For use with either RSV or RPV 4-key container valves



MMSS075RSV

- Micro Matic® Stainless Steel, RSV coupler
- 3/4" Horizontal hose barb connection
- For use with either RSV or RPV 4-key container valves



KIT180TPS

- 55 Gallon drum drop tube
- 3/4" Horizontal hose barb connection
- Vented system



KITDFH20

- 20' EPDM suction hose 3/4 inch
- Bare ends for hose barb connection
- DEF rated



KITDFH05

- 5' EPDM suction hose 3/4 inch
- Bare ends for hose barb connection
- DEF rated



KITDFFK

- (2) 1" BSP x 3/4" Hose Barb strait fittings with retaining nuts
- (2) 1" BSP x 3/4" Hose Barb 90-degree elbow fittings with retaining nuts
- (4) SS worm gear hose clamps



FILL-RITE **DEF**™

fillrite.com/def

 **Tuthill**
PUMP YOUR HEART INTO IT

8825 Aviation Drive
Fort Wayne, Indiana 46809
(800) 634-2695 or (260) 747-7524
UK +44 115 944 6774

FRDEFSB